

# Barrington Trace

## Homeowners Association



April 23, 2020

# Virtual Homeowners Association Meeting

## AGENDA

- 1. Welcome**
- 2. Guest Speakers**
- 3. POA Business**

# WELCOME TO THE VIRTUAL HOA MEETING

## ZOOM INSTRUCTIONS

1. Everyone has been placed on **“MUTE”**
2. To ask a question or comment - Send a message to Keisha Waites in the **“CHAT BOX”** and she will recognize you for your comment or question
3. You can send a message to Everyone or to an individual.

**ENJOY THE MEETING**

# Officers



**President**  
**Virgil Smith**



**Vice President**  
**Keisha Waites**



**Treasurer**  
**Staphea Campbell**



**Secretary**  
**D'Lovely Gibson**



**Assistant Treasurer**  
**Shanti Brown**



**Board Liaison**  
**Tammy Pollock**

## Guest Speakers



**Catherine Foster Rowell, PhD**  
**Councilwoman District 1**  
**City of South Fulton**



**Anna Roach, Esq.**  
**Chief Operating Officer**  
**Fulton County**



**Keith Meadows**  
**Chief of Police**  
**City of South Fulton**



**Dr. Catherine Foster Rowell**  
District 1 Councilwoman



# STAY CONNECTED

# TO THE CITY OF SOUTH FULTON

City of South Fulton | 470-809-7700 | 5440 Fulton Industrial Blvd. S.W., Atlanta, GA 30336



We are where you are  
Now on mobile!\*

Download  
**It'sMyTown** - The official city app



\*Privacy first! No registration needed! Real-time alerts, events calendar, public places, live meetings, official news, report issues, access to services, quick directory, nearby restaurants, send feedback with a tap and more.



cityofsouthfultonga.gov | Visit our website to sign up for our newsletter!



# SeeClickFix for City of South Fulton

A mobile app powered by **SeeClickFix**

SeeClickFix for City of South Fulton is a community-driven communication tool and request management system that bridges the gap between residents and their COSF officials to increase civic engagement and improve citizen services.

## Engagement, Communication, & Efficiency

### Download the SeeClickFix app

No more phone calls or lost post-it notes - citizens can submit 311 requests from a simple, intuitive mobile app, streamlining communications and increasing civic engagement.





# City of South Fulton and Fulton County Services

## City of South Fulton

**BULK TRASH DISPOSAL:** Residents can dispose of bulk items (i.e., furniture, electronics) and household products, (i.e., paints) at the Merk Miles Transfer & Recycling Center.

**ECONOMIC DEVELOPMENT:** Oversees business development, retention and attraction, promote tourism and staff the Tourism Board, support the Development Authority and process applications for the Freeport Exemption.

**FIRE & RESCUE:** Oversee emergency response training, provide emergency medical service, handle fire inspections & code enforcement, fire investigations, fire prevention education, fire suppression mitigation and hazardous material response.

**MUNICIPAL COURT:** Preside over traffic violations, criminal misdemeanor cases and violations of local ordinances.

**PARKS, RECREATION AND CULTURAL AFFAIRS:** Oversee recreation and cultural programs: Regulate athletic associations; park and facility rentals and maintenance, operation of South Fulton Arts Center and Southwest Arts Center.

**POLICE DEPARTMENT:** Handle traffic violations, criminal misdemeanors, local ordinance enforcement for the City of South Fulton.

**PLANNING, ZONING AND CODE ENFORCEMENT:** Handle community development and regulatory affairs, animal control in partnership with Fulton County, code enforcement, land disturbance, online permitting, planning and zoning and business licenses.

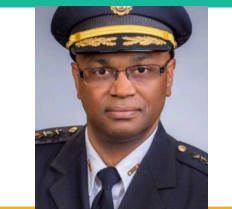
**PUBLIC WORKS:** Regulate solid waste haulers, and handle right of way maintenance, road repairs, capital improvements, TSPLOST project management and transportation planning.



Odie Donald  
City Manager



Catherine Rowell  
Councilwoman District 1



Kevin Meadows  
COSF Police Chief



Bill Edwards  
COSF Mayor



Dick Anderson  
County Manager



Joe Carn  
Commissioner District 6



Darryl Halbert  
Fulton County Police Chief



Robb Pitts  
Fulton County Commission Chair

## Fulton County

**ARTS & CULTURE:** Funding for County based nonprofit arts organizations and arts programming for residents.

**ATLANTA FULTON EMERGENCY MANAGEMENT:** Coordinates with cities on emergency management.

**BEHAVIORAL HEALTH AND DEVELOPMENTAL DISABILITIES:** Provide behavioral health and developmental disability services for children adolescents, emerging adults and adults and opioid and addiction services at three location across the County.

**BOARD OF ASSESSORS:** Determines the fair market value of all real and personal property in the county.

**BOARD OF HEALTH:** Conduct restaurant, pool, hotel motel and well/septic inspections, provide rodent, and mosquito control, tattoo inspection and operate five public health clinics.

**COOPERATIVE EXTENSION:** Educate and respond to citizen interest in agriculture and natural resources and provide 4-H programming for youth and families.

**COURTS:** Operate the State, Magistrate, Probate, Superior and Juvenile Court.

**DISTRICT ATTORNEY:** Prosecutes all felony violations of state law that accord within Fulton County.

**ELECTIONS:** Conduct elections and register voters.

**LIBRARIES:** Oversee the operation and administration of libraries in Fulton County.

**MARSHAL:** Enforce federal, state and local laws and ordinances, serve civil process and dispossessory warrants execute eviction writs, probation and magistrate court warrants, enforce rites of possession and conduct judicial sales and evictions.

**MEDICAL EXAMINER (CORONER):** Performs autopsies and other postmortem exams to determine cause of death.

**POLICE:** Respond to emergency and non emergency calls for services, investigative crimes committed against persons and property, conduct specialized investigations and crimes against the county in the unincorporated area of Fulton County.

**SENIOR SERVICES:** Adult day-care, home delivered meals, home repairs, senior centers, transportation and operate Starline information line.

**SHERIFF:** Administration and operation of Fulton County Jail, security for courtrooms and judges, warrant service/civil process special operations and investigative units.

**WORKFORCE DEVELOPMENT:** Operate Career Centers to assist residents to develop in order to sustain a world-class workforce.

**Questions?**  
**Comments**



# Keith Meadows

## Chief of Police

### MISSION

The Mission of the City of South Fulton Police Department is to provide high quality police services in cooperation with our communities, while implementing 21st Century Policing principles and adopting a guardian mindset as we serve the public. We will perform our duties with the highest degree of professionalism, dignity, respect and excellence in policing.





# SOUTH FULTON POLICE DEPARTMENT

# 20 19

# HIGHLIGHTS

Annual Report  
POLICE CHIEF KEITH  
MEADOWS



### AGENCY DEMOGRAPHICS

67% MALE  
33% FEMALE



## 137 SWORN OFFICERS

- 1 Chief
- 1 Deputy Chief
- 3 Majors
- 6 Captains
- 15 Lieutenants
- 18 Sergeants
- 93 Police Officers & Detectives

- 73% AFRICAN AMERICAN
- 14% WHITE
- 12% HISPANIC
- 1% ASIAN / OTHER

## 15 CIVILIAN EMPLOYEES

- Administrative
- Forensics
- Records
- GCIC
- Licenses & Permits

# 2019 CRIME STATISTICS

OFFENSE	2019	2018	% +/-
Homicide	17	22	-23%
Rape	24	19	26%
Robbery	168	141	19%
Aggravated Assault	427	440	-3%
Aggravated Battery	12	7	71%
Arson	17	12	42%
Burglary	451	562	-20%
Larceny – From Auto	924	1318	-26%
Larceny Other	1354	1555	-13%
Auto-Theft	648	720	-10%
<b>Total Offenses</b>	<b>4030</b>	<b>4789</b>	<b>-16%</b>

## CRIMES AGAINST PERSONS

Crimes Against Persons are crimes that are physical, violent, and often high profile. Murder, Rape, Robbery, Aggravated Assault, and Aggravated Battery are crimes contained within this category.

**636**

Crimes Against  
Persons

**9%**

From 2018

## CRIMES AGAINST PROPERTY

Crimes Against Property are crimes that involve the intruding, taking, or destroying of another person's property. Property crimes do not involve force or threats toward the owner. These crimes include burglary, larceny-theft and motor vehicle theft.

**3,355**

Crimes Against  
Property

**-15%**

From 2018

The City experienced an overall crime reduction of 16%

## Average Response Times (Calls for Service)



**77,536**  **21,177**  
**CALLS FOR SERVICE**  **WRITTEN REPORTS**



## FIELD OPERATIONS DIVISION

MAJOR THERON GRIFFIN

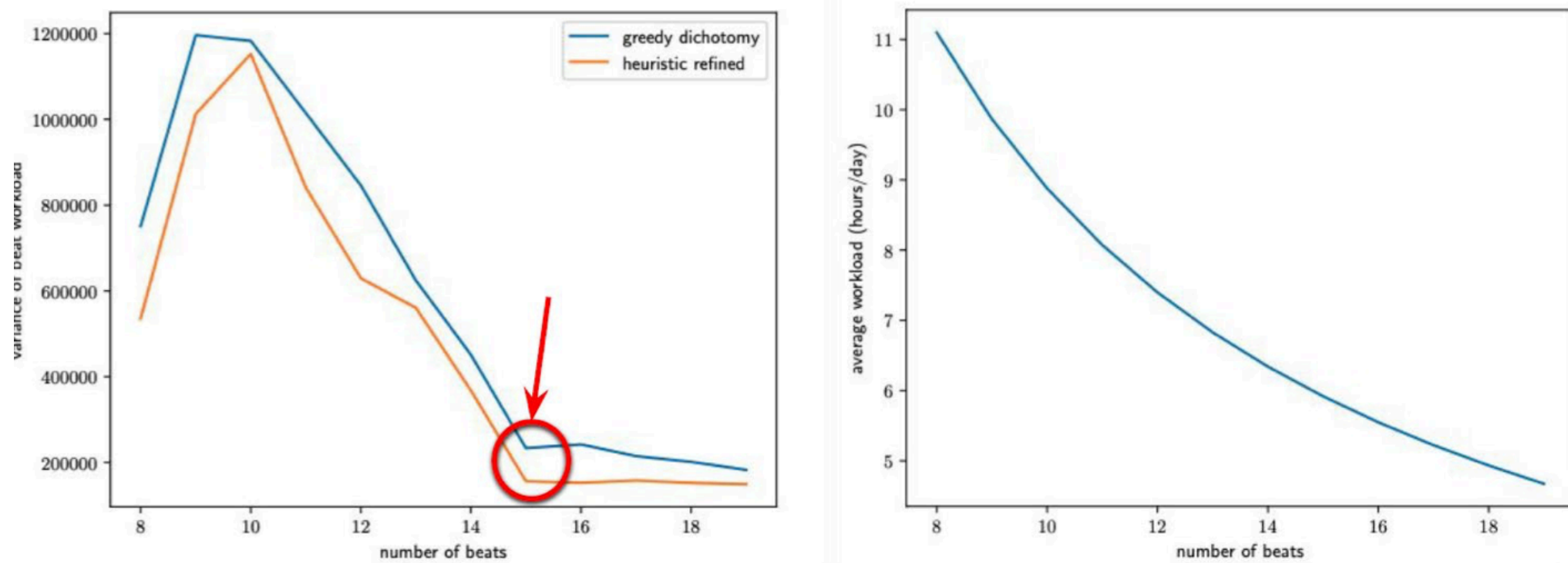
### TOP 10 CALLS FOR SERVICE

NATURE CODE	TOTAL OF CALLS
Alarm Call	11,741
Domestic Calls	9,832
Information for Officer	9,260
Suspicious Activity	6,158
All Accidents	5,787
Theft Call	4,592
Vandalism	1,278
Abandoned Auto	1,180
Shots Fired	1,143
Psychiatric Calls	785

### TOP 5 CRIMES REPORTED

Domestic 65%	9,832
Theft 30%	4,592
Burglaries 3%	446
Robberies 1%	155
Gunshots / Stabbings 1%	91

## Optimal number of beats analysis



Based on our analysis, the optimal number of beats is 15.

Based on analytics, machine learning, and predictions, the City of South Fulton will shift to 18 beats. This will greatly reduce workloads and improve response times.

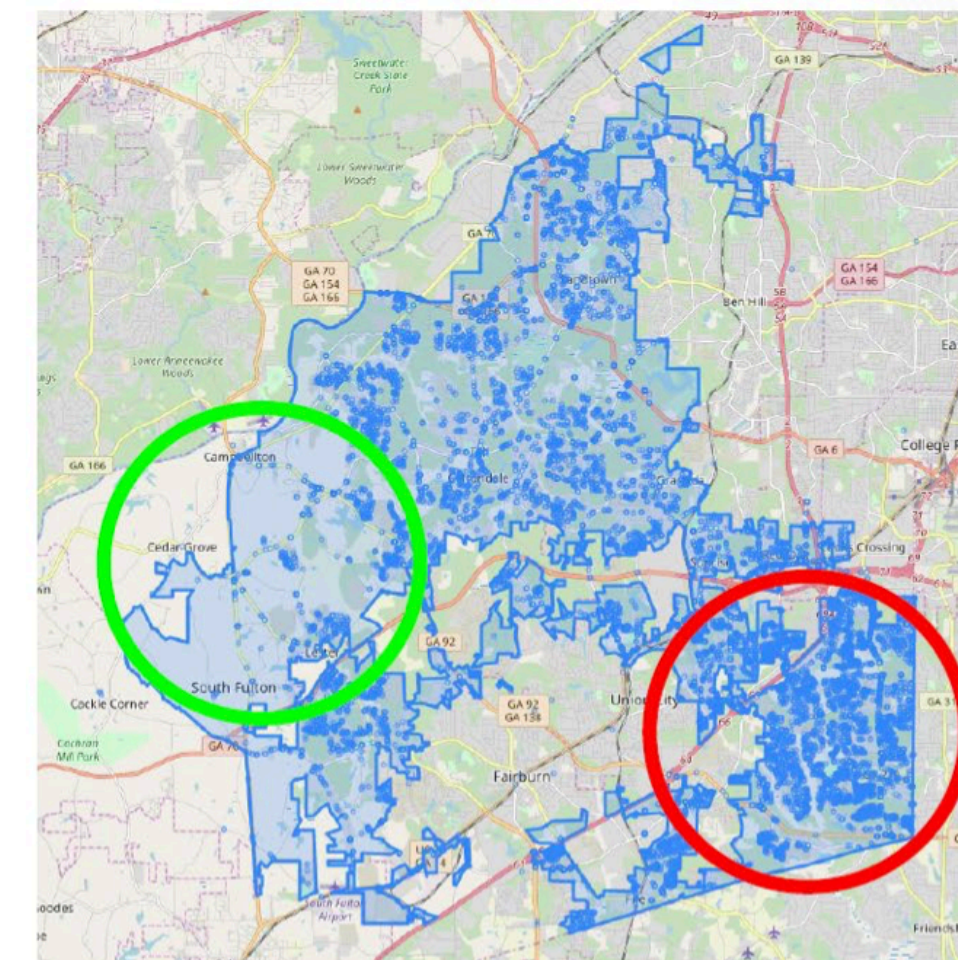
## Current Status

City of South Fulton Police Departments beats have not been changed since 1970, long before the incorporation of the city. Police workloads were unbalanced due to city growth.

## 911 calls-for-service data: Workload analysis

The spatial distribution of incidents in South Fulton.

- Some area has more calls than anywhere else**, which indicates the **imbalance workload** situation of the city.
- Next, we need to separate the city into blocks/zones to analyze workload of each blocks/zones.





**Questions?**  
**Comments**




# Anna Roach

Chief Operating Officer  
Fulton County  
Resident Barrington Trace



Anna Roach, Esq.

# Fulton County Update



**COVID-19  
Infection and  
Associated Rates**



**COVID-19  
Testing  
Locations**



**VULNERABLE  
POPULATION**  
-Homeless  
-Long term Care  
Facilities



**GOVERNOR'S  
Reopening Order**



# Fulton County Government

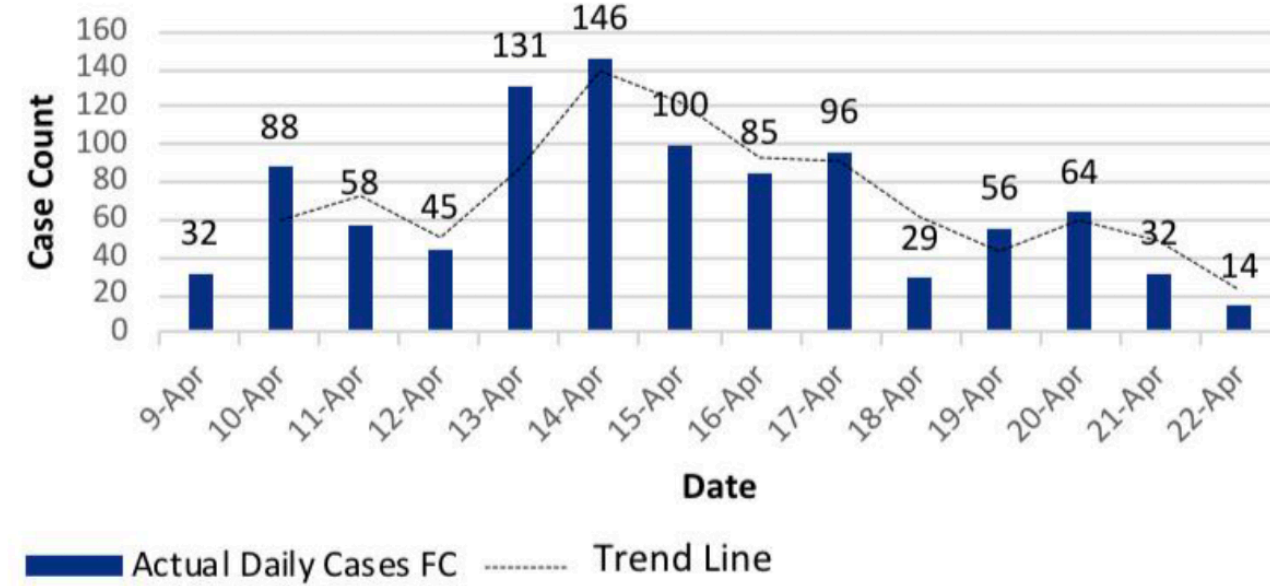
COVID-19 Update to the  
Barrington Trace Community

**Anna Roach**  
*Chief Operating Officer*

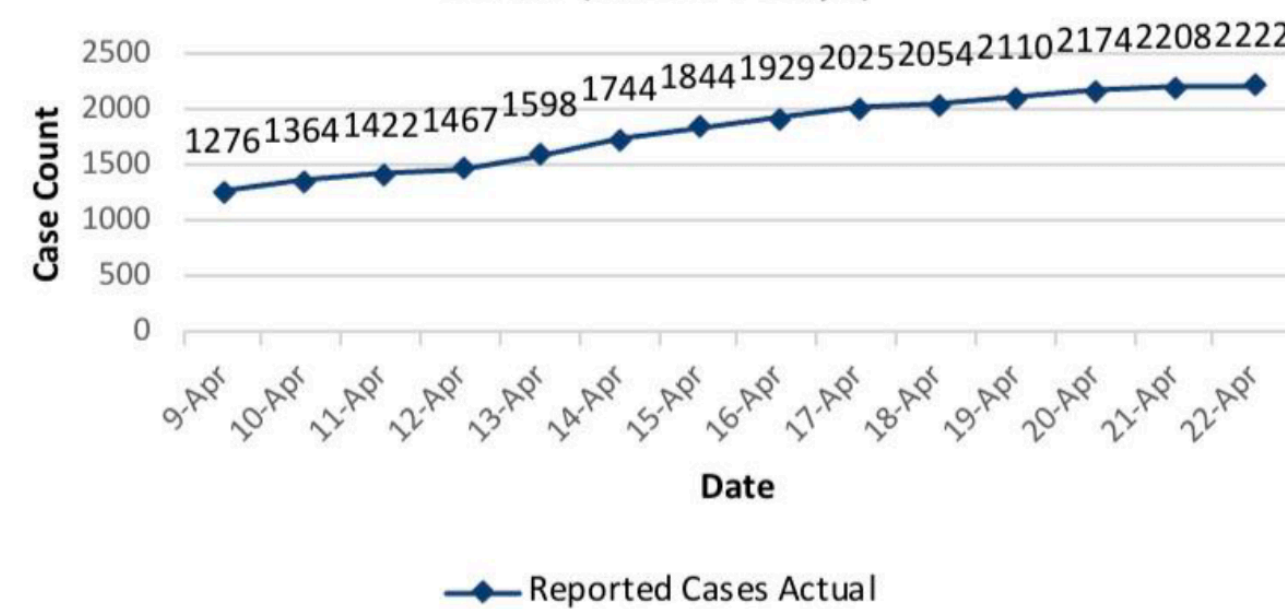
# INFECTION RATE

## Fulton County Data Trends 4/22/2020

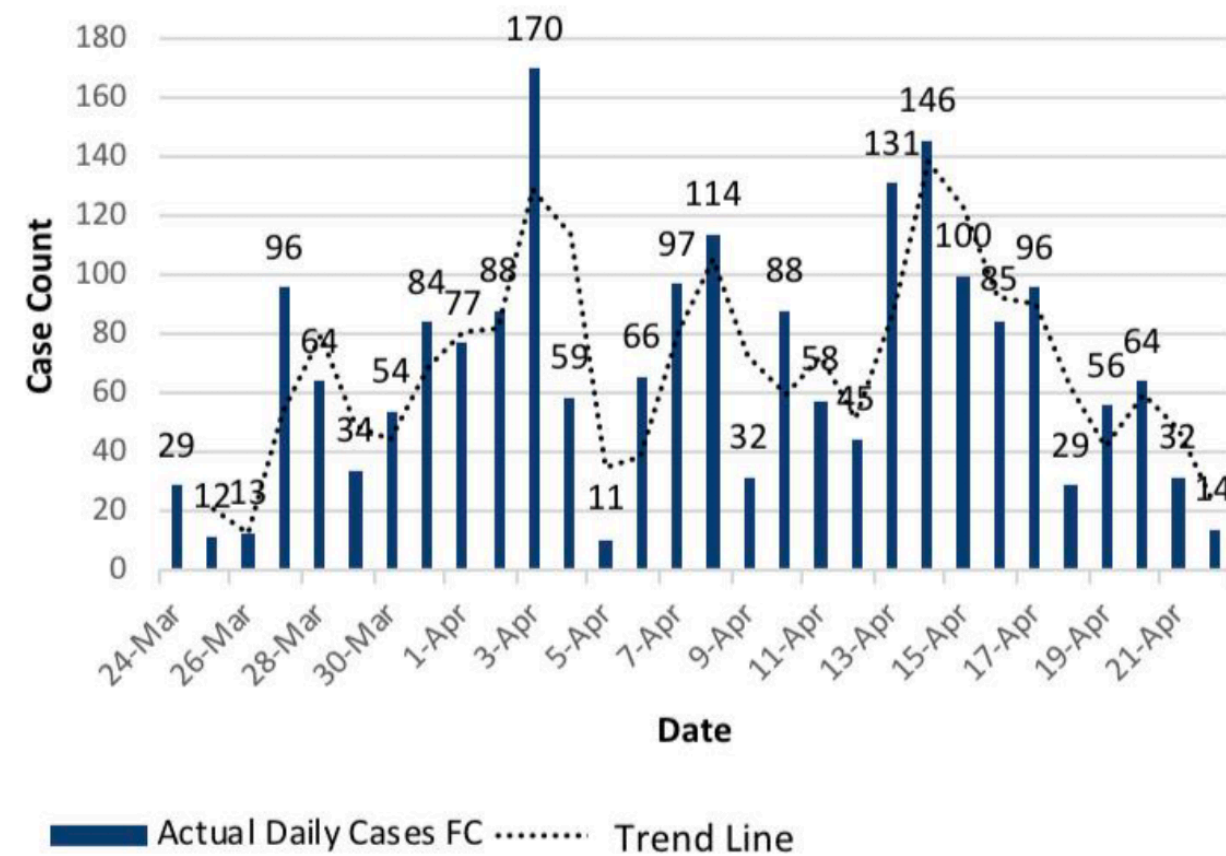
4-22-2020 Fulton County Daily Case Count (Last 14 Days)



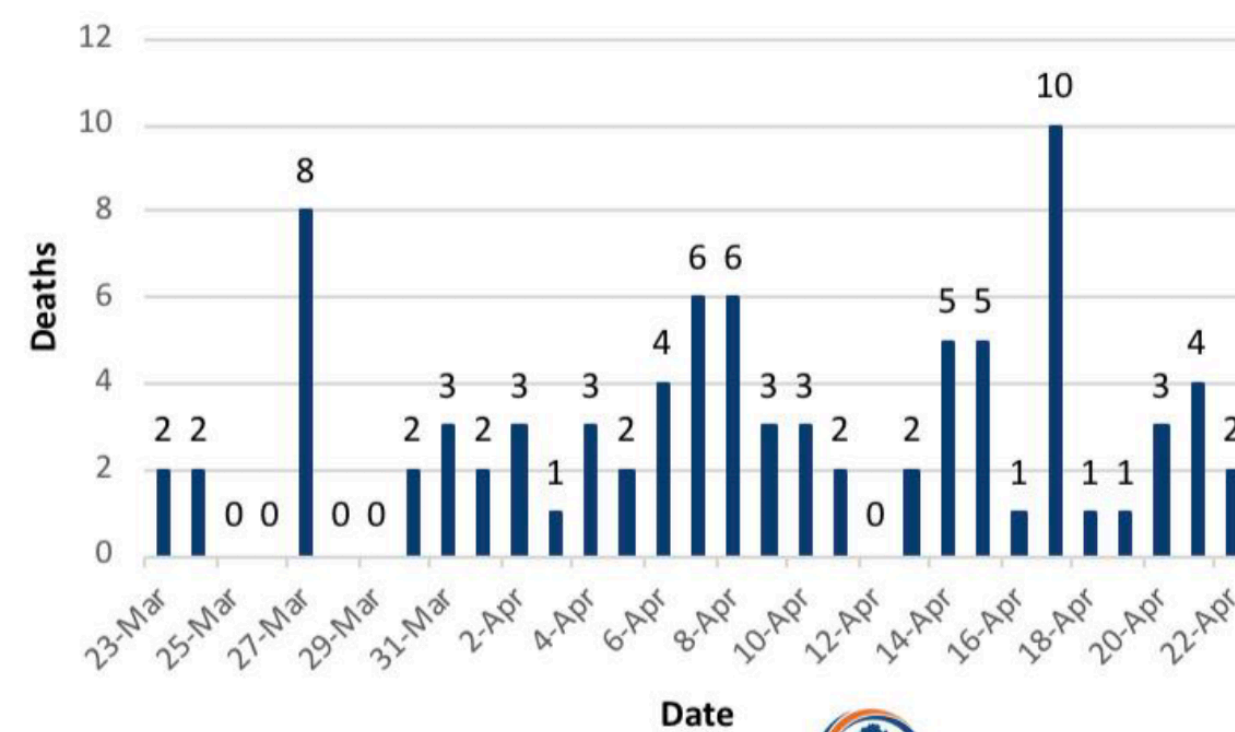
4-22-2020 Fulton County Cumulative Daily Case Count (Last 14 Days)



4-22-2020 Fulton County Daily Case Count



4/22/2020 Fulton County Daily Deaths



- As of noon on 4/23
  - 2308 cases in Fulton
  - 86 deaths in Fulton
  - 21,512 cases in GA
  - 872 deaths in GA
- Have cushions and ample capacity for:
  - ICU beds = 169 open
  - Hospital beds = 882 open
  - Ventilators = 183 open

# TEST LOCATIONS

- SPOC I - Aviation Center
  - Open Mon - Fri 8:30 am to 5:00 pm
  - Capacity 200+ daily
- SPOC II - Wolf Creek amphitheater
  - Opened Today
  - Open Mon - Sat 8:30 to 5 pm
  - Capacity 200+ daily
- CVS Health Care Pilot - GA Tech Campus
  - Open Mon - Fri 9:00 am to 6:00 pm and Sat 10:00 am to 5:00 pm ; and Sun 10:00 am to 4:00pm
  - Capacity 1

**GET TESTED FOR COVID-19**

- 1** Call the **FCBOH COVID-19 HOTLINE:**  
**404-613-8150**  
Monday thru Friday (8:30 a.m to 5:00 p.m)
- 2** Ask to speak to a **NURSE**  
to make an **APPOINTMENT**
- 3** Get tested at our **DRIVE-THRU TESTING SITE**

**SEE YOU AT THE TESTING SITE!**  
FULTONCOUNTYBOH.ORG

FULTON COUNTY BOARD OF HEALTH

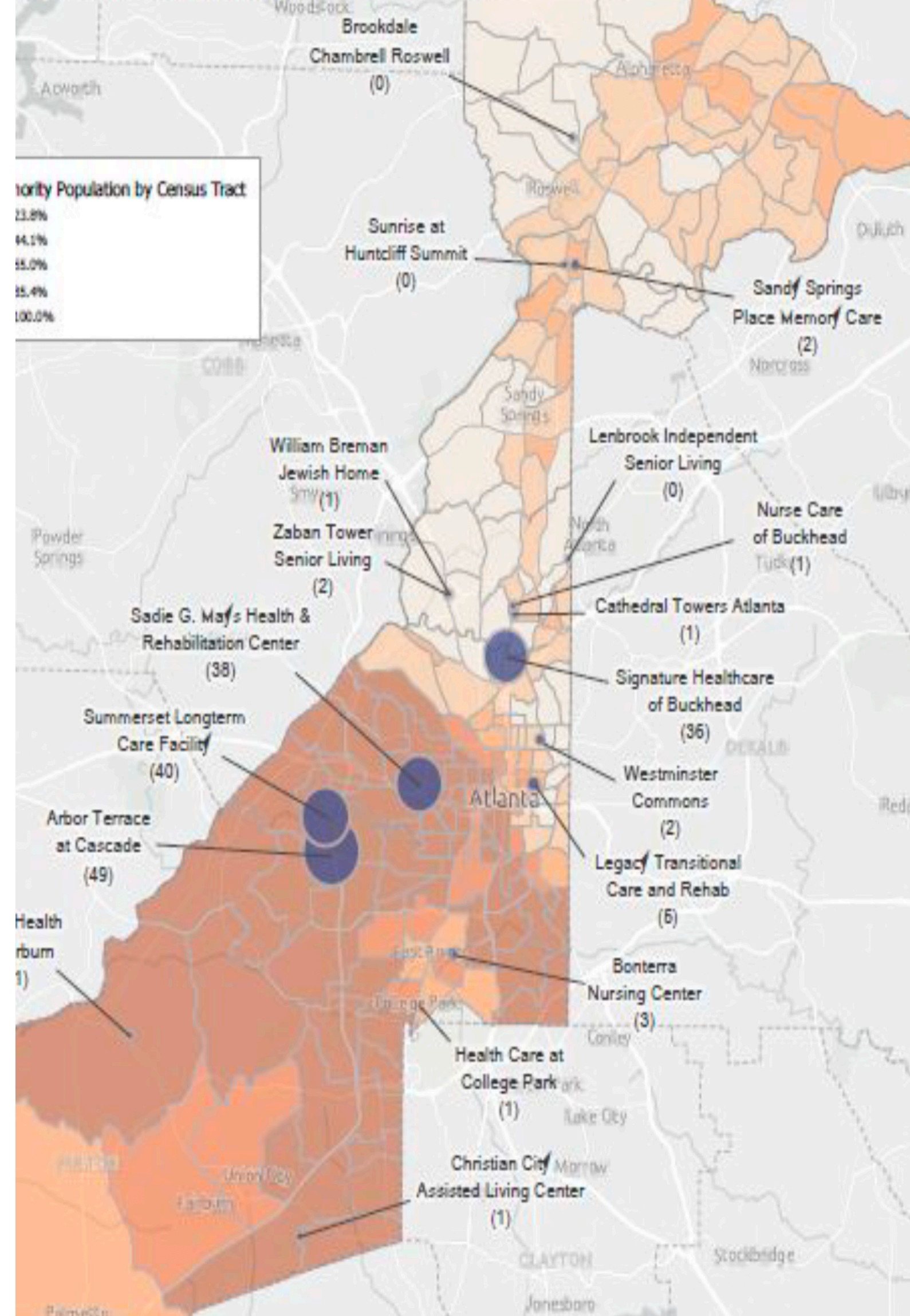
The infographic features a teal background with a white dashed line forming a path from the top text down to a white car icon at the bottom. The car is shown in profile, moving to the right. The text is arranged in three numbered steps, each in a white box with a black border. The first step includes a phone number and hours. The second step mentions a nurse and appointment. The third step mentions a drive-thru testing site. At the bottom, there is a call to action and the website URL, along with the Fulton County Board of Health logo.

# VULNERABLE POPULATIONS - Homeless



Mercy Care COVID-19 Testing Schedule					
Testing Site	Date	Hours of Testing	# of Projected Tests	Key Contact	Address
<b>Gateway</b>					
Gateway	April 8th & 9th	7:30 a.m. to 3:30 p.m.	300 Clients 50 Staff	Raphael Holloway <a href="mailto:rholloway@gatewayctr.org">rholloway@gatewayctr.org</a> Cell: 770-609-7628	275 Pryor Street Atlanta, GA 30318
Evolution Center	April 10th	7:30 a.m. to 3:30 p.m.	100 Clients 25 Staff	Raphael Holloway <a href="mailto:rholloway@gatewayctr.org">rholloway@gatewayctr.org</a> Cell: 770-609-7628	1135 Jefferson Street Atlanta, GA 30318
<b>Atlanta Mission</b>					
Atlanta Mission TSI Campus	April 13th & 14th	7:30 a.m. to 3:30 a.m.	220 Clients 20 Staff	Michael Sheppard <a href="mailto:Michael.sheppard@atlantamission.org">Michael.sheppard@atlantamission.org</a> Cell: 770-900-0824 Lionel Smith <a href="mailto:Lionel.smith@atlantamission.org">Lionel.smith@atlantamission.org</a> Cell: 951-816-1686	165 Ivan Allen Blvd. NW Atlanta, GA 30313
My Sister's House	April 15th & 16th	7:30 a.m. to 3:30 p.m.	135 Women 68 Children 30 Staff	Kimberly Livsey <a href="mailto:Kimberly.livsey@atlantamission.org">Kimberly.livsey@atlantamission.org</a> Cell: 404-295-4224	921 Howell Mill Road Atlanta, GA 30318
<b>Salvation Army</b>					
Salvation Army	April 17th & 20th	7:30 a.m. to 3:30 p.m.	150 Clients 47 Staff	Kem Hobbs <a href="mailto:Kem.hobbs@uss.salvationarmy.org">Kem.hobbs@uss.salvationarmy.org</a> Cell: 404-901-6996	469 Marietta Street Atlanta, GA 30313
<b>City of Refuge</b>					
City of Refuge	April 21 <sup>st</sup> & 22 <sup>nd</sup>	7:30 a.m. to 3:30 p.m.	Clients: 120 Staff: 50	Seth Lingenfelter <a href="mailto:seth@cityofrefugeatl.org">seth@cityofrefugeatl.org</a> Jeff Deel <a href="mailto:jdeel@cityofrefugeatl.org">jdeel@cityofrefugeatl.org</a> Cell: 770-608-7628	1300 Joseph E Boone Blvd, NW Atlanta, GA 30314

ed COVID-19 Cases\* Among  
 Its of Long-Term Care Facilities  
 Minority Population Distribution  
 se counts current as of April 16, 2020



# Vulnerable Populations Long Term Care Facilities

## DPH/BOH

- ❑ On-site testing and contact tracing
- ❑ Facilitate and fulfil PPE Requests
- ❑ Nursing consultation for infection prevention
- ❑ National Guard sanitizing of facilities (Governor's direction)
- ❑ SOE infection control guidance

## DCA

- ❑ Licensing and Oversight
- ❑ Healthcare Facility Regulation Division (HFRD) contacting each nursing homes of 25+ daily
- ❑ HFRD investigates complaints against health care facilities
- ❑ Office of the State LTC Ombudsman provides advocacy

## Fulton

- ❑ With BOH, develop corrective monitoring cadance for high infection facilities, and TA monitoring cadence for low infection facilities
- ❑ Establish fund to provide PPE acquisition and staff augmentation support
- ❑ Provide funding/ support for meals where interrupted supply chain affected ability to provide meals



# GOV. KEMP EXECUTIVE ORDER

- Friday April 24 - Allows Opening “minimum basic operations” of:
  - Elective surgeries
  - Gyms
  - Fitness Centers
  - Bowling alleys
  - Tattoo Parlors
  - Estheticians
  - Hair Salons
  - Massage Parlors
- Monday April 27
  - Restaurants
- The order precludes any local order from contradicting
- Order contains several caveats aimed at reducing risk of spread (ie.e. Encourages social distancing, etc).
- Shelter in place Order remains in place till April 30.
- Public Health State of Emergency remains in place until May 15.

**Questions?**  
**Comments**

Barrington Trace  
Homeowners Association

**Business Agenda**



# Business Agenda

1. 2020 Amenity Key/Lanyard - Keisha Waites
2. Pool Opening- Keisha Waites
3. Social Distancing- Keisha Waites
4. Leasing Update - D'Lovely Gibson
5. Occupancy Affidavit - D'Lovely Gibson
6. Financials - Staphea Campbell
7. Flock Camera Registration - Virgil Smith



## Practice Social Distancing

- Basketball Court
- Tennis Court
- Playground

### CAUTION

Playground and basketball court are not sterilized; play at your own risk.

Social distancing required:

- 6 feet between each child NOT in immediate family
- Limit number of people playing at one time

In accordance with local city and state guidelines due to COVID-19, the Barrington Trace Board of Directors reminds you to follow the shelter-in-place state ordinance and our city's 7:00AM to 9:00PM curfew guidelines. To keep our residence safe, we urge you to follow all social distancing best practices on the basketball court and playground. For more information visit: [cityofsouthfultonga.gov](http://cityofsouthfultonga.gov).



## Pool Opening Date

- The Swimming Pool will be open when it's safe to do so.
- The new keys will be ready prior to the pool opening date.





# Pressure Wash Mailbox

Reduced  
Price  
\$25.00 per  
Mailbox

- **Steven Duncan**  
**(678) 481-9874**
- In the neighborhood this weekend to pressure wash mailboxes or other areas of your home.



**Questions?**  
**Comments**



# LEASING REPORT

-

# Barrington Trace HOA

## Under Leasing Cap

Lease Administration Fee\*

\$275

Resolution Date

12/23/19

Leasing Cap (Units)

24

Report Date

April-20



**HERITAGE**  
PROPERTY MANAGEMENT SERVICES INC



Grandfathered Leases

2

Suspected Unapproved Leasing

7

Normal Leases

2

Affidavits Received

100

Hardship Leases

0

Average Rental Rate

\$2,600.00

Number on Waitlist

0



**Questions?**  
**Comments**

Mar. 2020 YTD

# BALANCE SHEET



	2020	2019	Difference	% Change
<b>CASH</b>				
Petty Cash - BB&T	\$9,157	\$6,802	\$2,356	34.64%
Operating Account	\$65,445	\$103,121	-\$37,676	-36.54%
<b>Total Cash</b>	\$74,602	\$109,923	-\$35,320	-32.13%
<b>Cash Reserves</b>				
Reserve Account	\$88,871	\$53,216	\$35,655	67.00%
<b>Total Asset</b>	\$163,473	\$163,139	\$335	0.21%
<b>LIABILITIES</b>				
Accounts Payable	-\$0	\$0.00	-\$0	0.00%
Collection Fees Payable	-\$55	\$168	-\$223	-132.73%
Prepaid Dues Payable	\$12,596	\$4,496	\$8,100	180.15%
<b>Total Liabilities</b>	\$12,541	\$4,664	\$7,877	168.88%
<b>Total Reserves</b>	\$88,871	\$53,216	\$35,655	67.00%
<b>EQUITY</b>				
Prior Years' Net Income	\$29,415	\$59,940	-\$30,525	-50.93%
Net Income (Loss)	\$32,646	\$45,319	-\$12,673	-27.96%
<b>Total Equity</b>	\$62,061	\$105,258	-\$43,198	-41.04%
<b>TOTAL LIABILITY / EQUITY</b>	<u>\$163,472</u>	<u>\$163,139</u>	<u>\$334</u>	<u>0.20%</u>

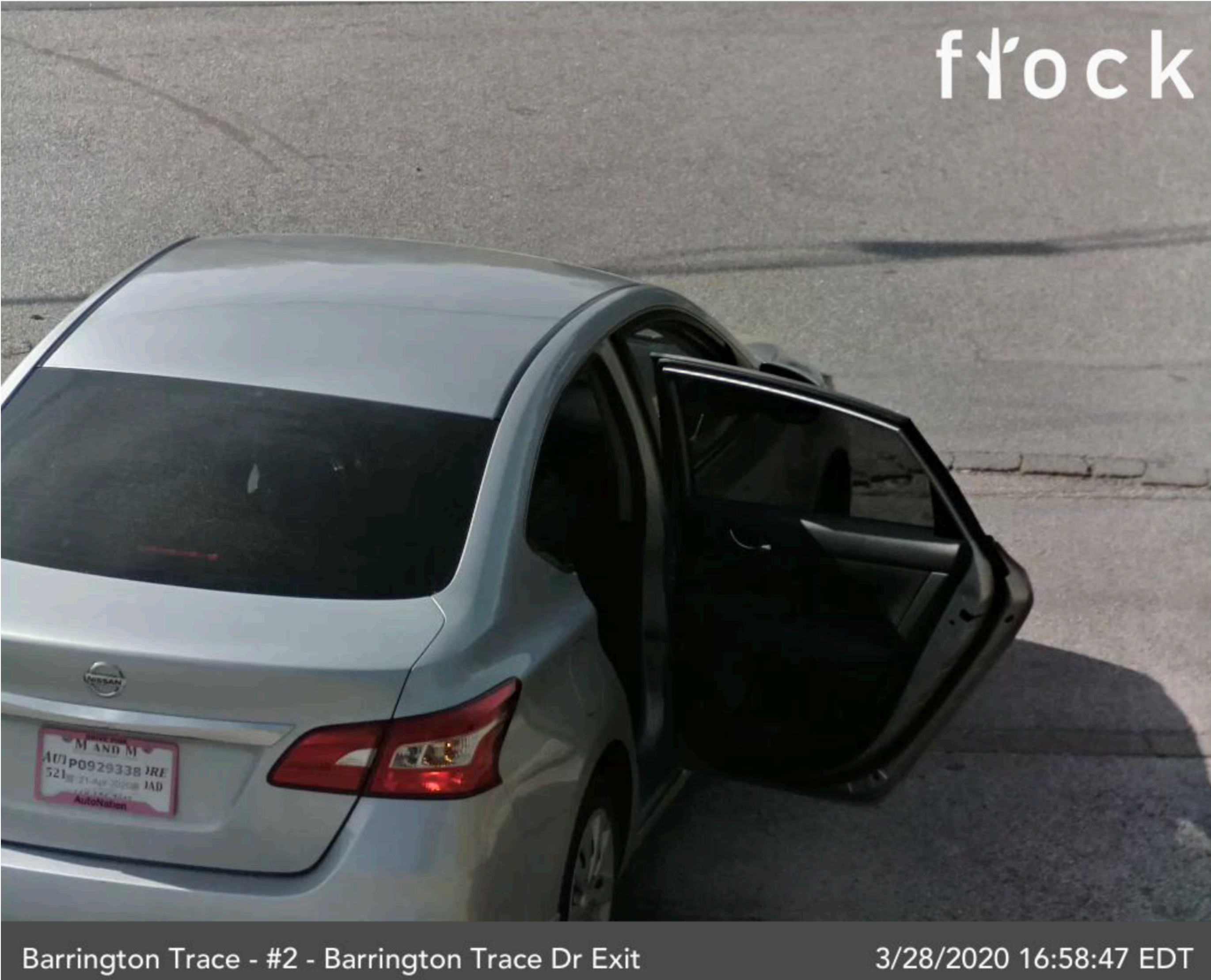
# STATEMENT OF INCOME

Mar. 2020 YTD



FINANCIAL CATEGORIES	Current Year	Current Budget	Difference	% Change	Last Year	Difference	% Change
<b>Income</b>							
<b>Total Operating Income</b>	<b>\$89,195</b>	<b>\$28,187</b>	<b>\$61,008</b>	<b>216.4%</b>	<b>\$93,022</b>	<b>-\$3,826</b>	<b>-4.11%</b>
<b>Expenses</b>							
General and Administration	\$6,310	\$5,762	\$548	9.5%	\$6,027	\$283	4.70%
Taxes and Insurance	\$1,839	\$1,722	\$117	6.8%	\$1,779	\$60	3.35%
Recreation Area	\$3,470	\$3,032	\$438	14.4%	\$14,660	-\$11,190	-76.33%
Landscaping	\$7,252	\$4,428	\$2,824	63.8%	\$4,153	\$3,099	74.63%
Utilities	\$4,067	\$3,972	\$95	2.4%	\$4,143	-\$76	-1.84%
Maintenance and Services	\$1,511	\$1,253	\$258	20.6%	\$7,846	-\$6,334	-80.74%
<b>Total Operating Expense</b>	<b>\$24,449</b>	<b>\$20,169</b>	<b>\$4,280</b>	<b>21.2%</b>	<b>\$38,607</b>	<b>-\$14,158</b>	<b>-36.67%</b>
<b>Net Operating Income (Loss)</b>	<b><u>\$64,746</u></b>	<b><u>\$8,018</u></b>	<b><u>\$56,728</u></b>	<b><u>707.5%</u></b>	<b><u>\$54,414</u></b>	<b><u>\$10,332</u></b>	<b><u>18.99%</u></b>
<b>Net Operating Income Margin</b>	<b>72.59%</b>	<b>28.45%</b>	<b>92.98%</b>		<b>58.50%</b>	<b>-270.04%</b>	
<b>Reserves</b>	<b>\$88,871</b>	<b>\$88,116</b>	<b>\$755</b>	<b>0.9%</b>	<b>\$53,216</b>	<b>\$35,655</b>	<b>67.00%</b>

**Questions?**  
**Comments**



Barrington Trace - #2 - Barrington Trace Dr Exit

3/28/2020 16:58:47 EDT



# Flock Safety

**Cameras are shared with South Fulton Police**

## What

### License Plate

License Plate	Type	State
---------------	------	-------

### Body

Build	Make	Color
-------	------	-------

### Behavior

Residency	Bicycles	Person
-----------	----------	--------

- Residency**
- Residents only
- Non Residents only

**Be sure and register your vehicles**

# 2020 HOA MEETINGS

**1** 7:00 PM - 8:30 PM  
**APRIL 23, 2020**  
Thursday

**END OF FIRST QUARTER**

**2** 7:00 PM - 8:30 PM  
**AUGUST 20, 2020**  
Thursday

**END OF SECOND QUARTER**

**3** 7:00 PM - 8:30 PM  
**NOVEMBER 17, 2020**  
Thursday

**ANNUAL MEETING**



**Questions?**  
**Comments**